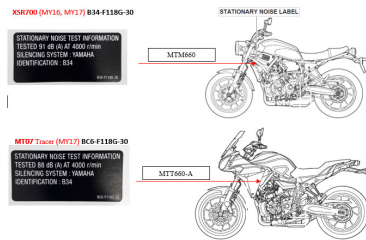


Product Safety Recall



YAMAHA MT07/XSR700 Motorcycle REGULATION STATIONARY NOISE TEST LABEL

MODEL	CPA	MODEL YEAR	FRAME NUMBER		
			PREFIX NO.	FROM	TO
MT07 (MTT660-A)	48058	2017	RM161	000101	000561
XSR700 (MTM660)	47590	2016 2017	RM131	000102 001101	000601 001520

WHAT ARE THE DEFECTS?

Your model is designed and fully complies to all the applicable Australian regulated emission standards; however, the STATIONARY NOISE TEST LABEL was not attached to the motorcycle in accordance with the requirements of ADR (Australian Design Rule).

WHAT ARE THE HAZARDS?

The omission of this label on your model therefore renders the model a non-compliant road vehicle.

WHAT IS THE REMEDY?

To correct this non-conformity, Yamaha is initiating a Factory Modification Campaign, whereby all affected XSR700 models must have the Stationary Noise Test Label fitted by the Yamaha dealer as soon as possible and at no charge to you.

WHAT TO DO?

You should contact your closest Yamaha Dealer to set up an appointment to have your model remedied free of charge.

Contact details: for help finding your nearest authorised dealer call

1300 593 600 or visit the website: <https://www.yamaha-motor.com.au/>

Australian Importer/Distributor
Yamaha Motor Australia
489-493 Victoria Street, Wetherill Park
NSW, Australia

See www.productsafety.gov.au for
other Australian consumer product recalls